

October 16th, 2024



Remote Learning at Tiegerman Preschool at Far Rockaway

Michelle Costantino and Esther Price

'What's and 'Why's of Remote Learning

1

In the event of a school closure, Tiegerman has developed a remote learning plan to ensure continuity of learning.

2

Remote learning is an educational process in which the teacher and student are learning in a virtual space and not physically in a traditional classroom environment.

3

Reasons for emergency school closure may include;

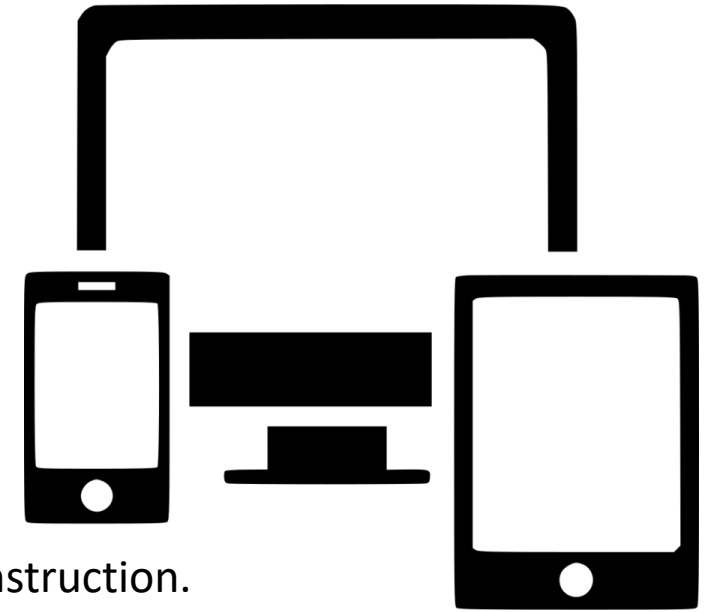
- extraordinary adverse weather conditions,
- impairment of heating facilities,
- insufficiency of water supply,
- shortage of fuel,
- destruction of a school building,
- a communicable disease outbreak
- staffing compliance/certification
- etc.



Materials and Technology

Remote learning platforms being used

- Class Dojo to share classroom schedules, and educational activities
- E-mail to share overall information
- Microsoft Teams is used for the provision of tele-therapy services and classroom instruction.



Technology/devices being used by the school and student/family

Synchronous and asynchronous instruction, as well as assignments and therapy services, are presented through the Class Dojo platform and/or Microsoft Teams. They can be accessed by students via computer, iPad, tablet, or mobile phone.



Access to Technology


Access to Technology

- A parent/caregiver survey was conducted to determine home resources and internet connectivity.
- ALL students will be issued a Tiegerman iPad.
- If a parent/caregiver reports limited or no internet connectivity, then the student will be provided with an iPad that includes cellular service for use during remote instruction.

**For those students for whom remote instruction is not available or appropriate, teachers and therapists will contact a parent/caregiver via phone daily or on scheduled therapy days to discuss appropriate learning activities using everyday materials in the home (e.g., read a book, draw a picture about it; play I Spy to work on vocabulary and describing, etc.).

Technology Issues

- If a parent requires technology support, please contact your social worker or teacher to resolve the issue.
- If the issue cannot be resolved, the Tiegerman staff member will contact the Tiegerman IT Department for support.


TIEGERMAN
TEACHING THE EXTRAORDINARY
EXPERTS IN LANGUAGE AND COMMUNICATION DEVELOPMENT

September 2024

Dear Parent/Guardian(s),

Please be aware that school can close unexpectedly at any time due to inclement weather; guidance from the Department of Health or world events (i.e., a pandemic). If this was to occur, there is a strong chance that the school would operate remotely. This means that instead of the students coming to school in-person, they would participate in classroom instruction and therapy sessions [online](#).

In order to prepare for a potential Remote Learning day, we kindly ask you to complete and return the questionnaire below. We would like to better understand your family's technology needs.

We would also like you to be aware that if the school anticipated a Remote Learning day in advance, a school iPad would go home with your child. As a result, we are also asking you to complete and return the attached iPad Agreement Form. **Student iPads must be returned to school after a Remote Learning day and/or period.**

Thank you in advance and please do not hesitate to contact me if you have any questions!

Michelle Costantino
Building Principal

Tiegerman Preschool at Far Rockaway: Technology Needs Survey for Parents
Please return this form to Michelle Costantino (School Principal)

Student Name: _____ Class: _____ Teacher's Name: _____

Please answer the questions below:

1. Does your child have access to a laptop, desktop, Chromebook, iPad or full-size tablet to participate in remote learning? *A phone or mini device does not count.*
 Yes No
2. At home, does your child have reliable internet that allows them to participate in remote learning?
 Yes No
3. Does your child have a device at home for their use only? *This means they do not have to share the device with other family members.*
 Yes No

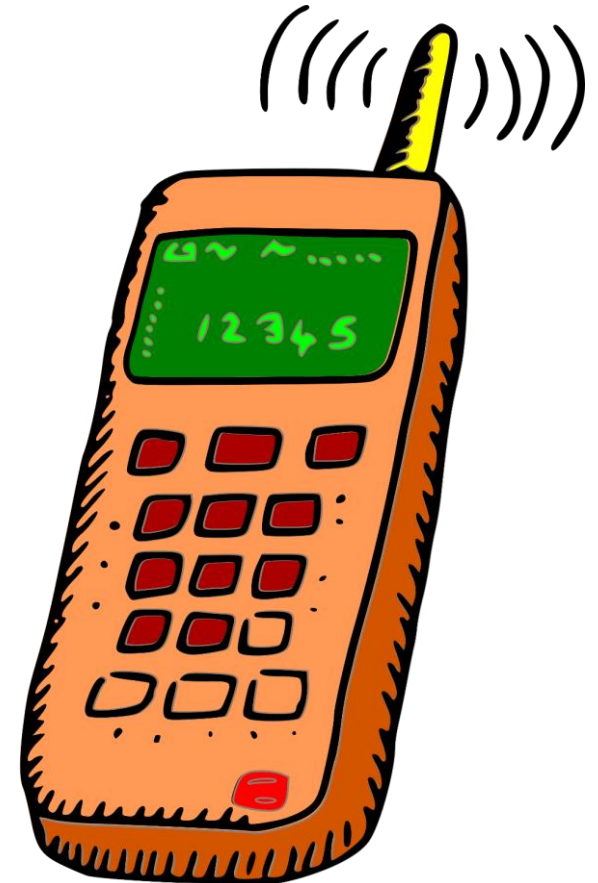
Parent Signature: _____ Date: _____



Notifying Families of Remote Learning

If Tiegerman switches to Remote Learning, all families will be notified using the following methods:

- A notification will be posted on Class Dojo
- An email will be sent to all parents
- If possible, a notice will be placed in backpacks
- Parents will receive an automated phone call



Teacher Instruction

- A daily schedule will be posted on Class Dojo as early as possible; ideally the day before so all can best prepare.
- The virtual classroom schedule will mimic the regular classroom day as much as possible.
- The schedule will consist of synchronous and asynchronous learning.



Ms. Esther
Demo Class

Feb 17, 2021

Snow Day Schedule -Sample Schedule

9:00- Welcome to our Day!

9:30 -Morning Circle Time on Teams

10:00- Morning Centers: Art, Sensory

11:00 - Lunch

11:30 -SEL with Dr. Nicole

12:00 - Read-Aloud

12:30 - Afternoon Circle on Teams

1:00 - Music and Movement

1:30 - Recap/goodbye song

Check out our Schedule for tomorrow!



Like




Comment






Teacher Instruction (cont.)


- Synchronous learning will take place during the classroom circle time, conducted over Microsoft Teams. Circle Time is 30 minutes.
- Asynchronous will consists of photos, videos and text shared over ClassDojo that will mimic the rest of the day including:
 - Centers
 - Story time
 - Music and Movement

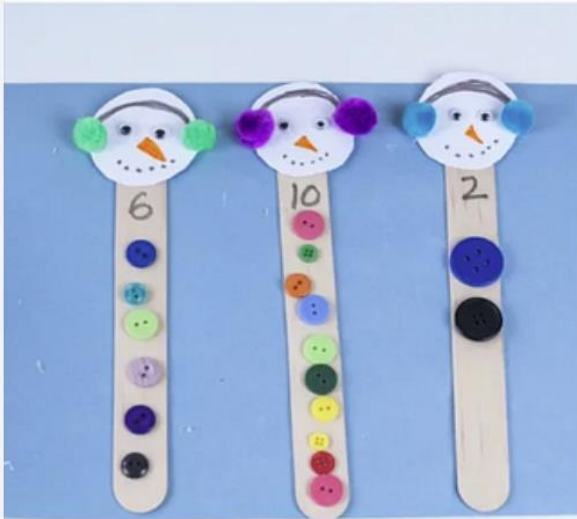
 **Ms. Esther**
Demo Class just now

Please Join Circle Time at 10:30 this morning;

https://teams.microsoft.com/l/meetup-join/19%3ameeting_ZTRkY2lINzEtYjAwZi00M2Y3LTgxNzUtNWlzMmFjYzcxNmQ4%40thread.v2/0?context=%7b%22Tid%22%3a%22e9426f80-833d-40a8-8cb7-ca16d39618b6%22%2c%22Oid%22%3a%22230f70ca-143e-4b12-aefc-f3bb7e4e1024%22%7d

 Like  Comment 

 **Ms. Esther**
Demo Class just now



Art and Cognitive Center presented with Ms. Esther!

Supplies needed; Buttons, sticks, pom poms, glue

Therapy Instruction

- Synchronous therapy sessions will take place via Microsoft Teams
- Therapy sessions are 30 minutes each (as per the child's IEP)
- The therapist will reach out to each parent to schedule the time, send the invite and inform them of materials they will be using.



Attendance

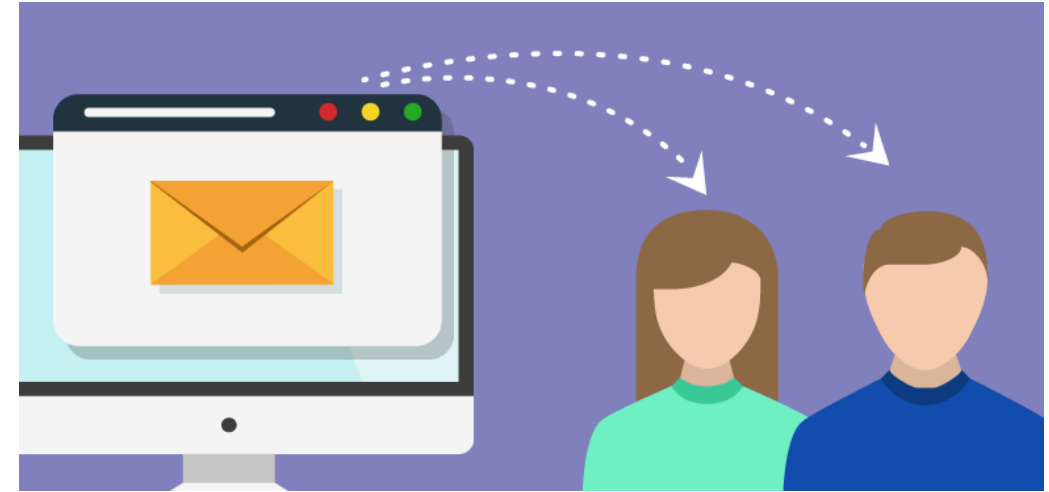
- Staff will take attendance during remote learning days.
- If a child attends the first live session, he/she will be marked present.
 - If a child does not attend the first live session, a member from the classroom staff will call the parent(s) to ask them if their child is present for remote learning.
- A child will be marked present, if he/she:
 - Participates in a live session
 - Attends a tele-therapy session
 - Shares completed work with the classroom staff



*Attendance is very important during remote learning days (as it is in school). Consistent attendance leads to positive learning outcomes.

Communication

Administration, social workers and health staff will be available to discuss any school-related issues with parents.



Michelle Costantino, MCostantino@Tiegerman.org

Esther Price, EPPrice@Tiegerman.org

Avrohom Fordonski, AFordonski@tiegerman.org

Alexandra Eidlisz, AEidlisz@tiegerman.org

Juliana Montes, JMontes@tiegerman.org

Patricia Donovan, PDonovan@tiegerman.org

Some Educational Websites



•ABCya Educational games	https://www.abcya.com
•CBC Kids Canada Media Fund, many fun games	https://www.cbc.ca/kidscbc2/
Math Chimp Educational math games	https://www.mathchimp.com/
National Geographic Kids Fun science games and quizzes	https://kids.nationalgeographic.com/
PBS Kids Games (General)	https://pbskids.org/games/
Highlights Kids	https://www.highlightskids.com/games
LEGO Kids	https://www.lego.com/en-us/kids/games



CBC Kids



**NATIONAL
GEOGRAPHIC
KiDS**



Math Chimp
Activities aligned to the Common Core

Any Questions??

